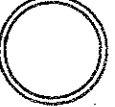
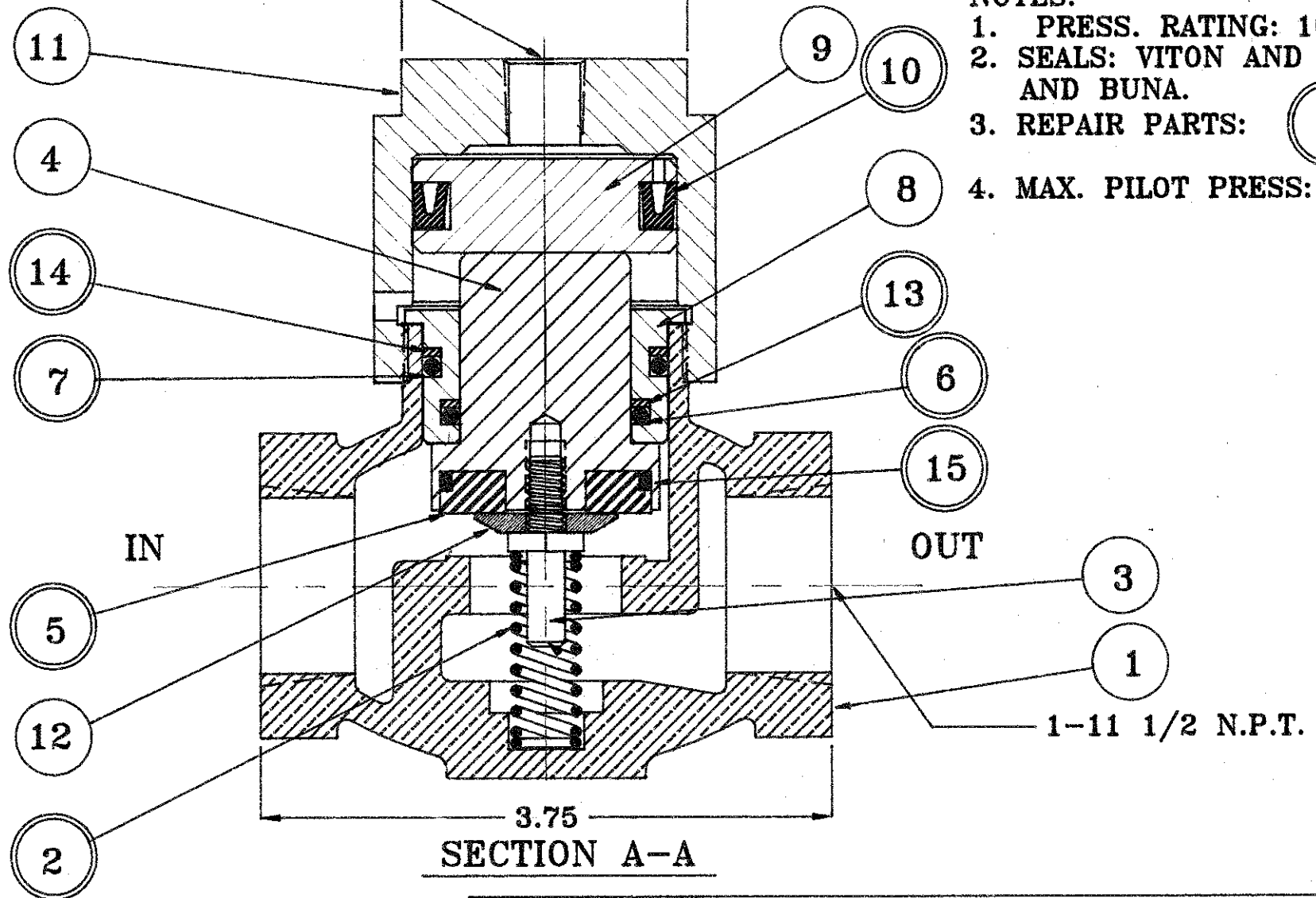
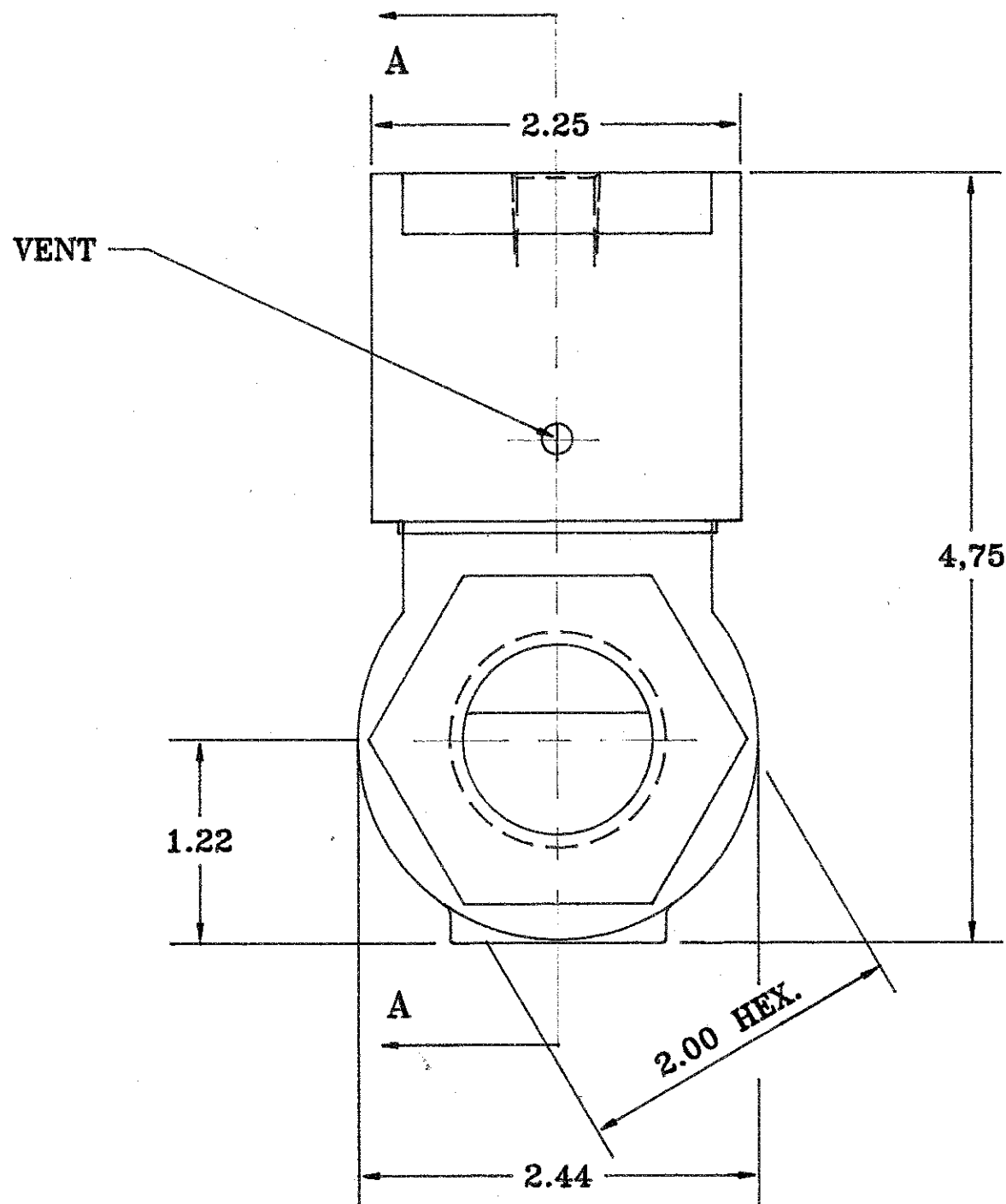


1/4-18 N.P.T.

1.88 ACROSS FLATS

NOTES:

1. PRESS. RATING: 1000 PSI
2. SEALS: VITON AND TEFLON. AND BUNA.
3. REPAIR PARTS: 
4. MAX. PILOT PRESS: 150 PSI



SECTION A-A

ASSEMBLY NO.	DESCRIPTION
4136 - 203	1", DPO, NO, 1000 PSI, BRASS PILOT CAP AND PISTON, S'LESS ST. POPPET GUIDE, SEAT RETAINER, SPRING GUIDE
4136 - 202	1", DPO, NO, 1000 PSI, ALUM. PILOT CAP, AND PISTON.
4136 - 201	1", DPO, NO, 1000 PSI, BRASS PILOT CAP, AND PISTON.

THIS DOCUMENT AND ITS CONTENTS ARE THE PROPERTY OF LEXAIR, INC. THEY ARE FURNISHED TO YOU ON THE FOLLOWING CONDITION: THIS DOCUMENT IS LOANED TO YOU BY LEXAIR, INC. AND IS NOT TO BE COPIED, REPRODUCED OR DISCLOSED TO ANY OTHER PERSON WITHOUT THE WRITTEN CONSENT OF LEXAIR, INC. OR TO BE USED IN ANY MANNER THAT MAY BE DETRIMENTAL TO THE INTERESTS OF LEXAIR, INC. OR TO BE USED FOR ANY OTHER PURPOSE THAN THAT FOR WHICH IT WAS ORIGINALLY INTENDED.

REVISION

A	ADDED ITEM NO. 15, AND REDESIGNED NO. 4 AND RELOCATED NO. 14 AND NO. 13. CHGD SPRING. ECL: 93104 7-19-93
B	REVERSED "IN" AND "OUT" DESIGNATION PER CUST. REQUEST ECL: 93151 9-30-93 MFM
C	ADDED MAX. PILOT PRESS ECL: 95057 3-17-95 BP
D	ADDED ASSY. 4136-202 ECL: 98259 12-14-98MFM
E	ADDED 4136 - 203 ECL: 99186 8-13-99 MFM

ECL: 93049

Tolerances Unless Otherwise Specified			MATERIAL SPEC.	PC. NO. SEE SCHEDULE
TYPE	FINISHED	AS CAST		
DEC .00	±.015	±.030	PROCESS SPEC.	MADE FROM
DEC .000	±.005	±.010		
FRACTIONAL	±1/64"	±1/16"	DWG. B 4136-201 SIZE	SHEET NO. 1 OF 1 SHEETS
ANGLES	±1/2°	±1°		
1"-DPO-NO TEFLON SEALS 2-WAY POPPET ASSEMBLY			SCALE N.T.S.	
Lexair, Inc. LEXINGTON, KENTUCKY			DRAWN JDR 08-13-99	CHECKED MFM 8-13-99
			APRVD. MFM 8-13-99	APPROX. WT.